



# Patriot Thermal Fluid Heater

ADD A SABER STACK FOR MORE FUEL SAVINGS \$\$



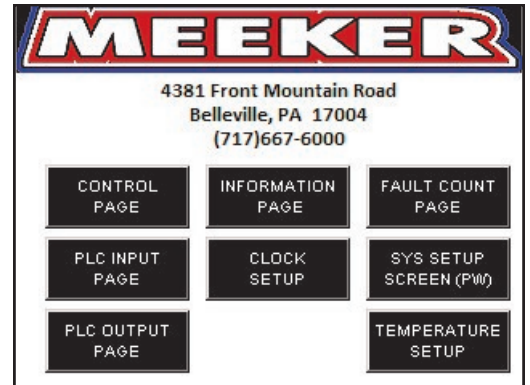
THE ONLY HEATER THAT TALKS TO YOUR SMARTPHONE!



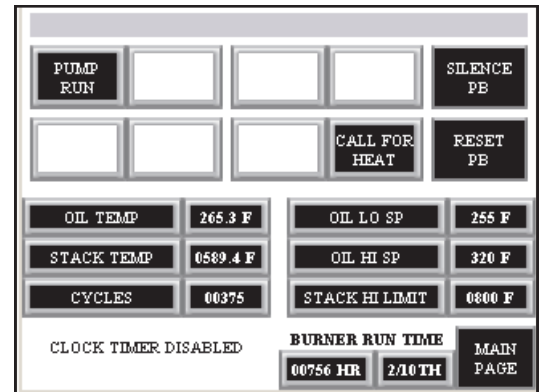
### Standard Features

- Helical Coil, Two Pass design
- All Heaters are test fired at the factory
- Allen Bradley Micrologix PLC with easy user interface.
- Removable Expansion Tank
- "Christmas" tree light to see heater status from across the property
- Powerflame gas/oil burner
- Honeywell Display Module for burner status or faults
- High flow SIHI centrifugal pump

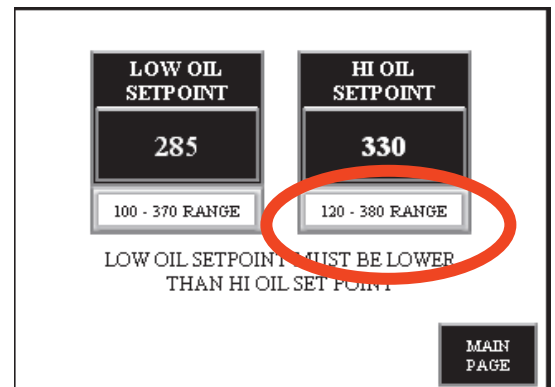
### EASY AND SIMPLE TO USE



### VALUABLE STATUS WINDOW



### ON SCREEN PROMPTS HELP USER





# Patriot Thermal Fluid Heater

CHRISTMAS  
TREE SHOWS  
SYSTEM STATUS,  
HEAT DEMAND,  
AND LOCKOUT



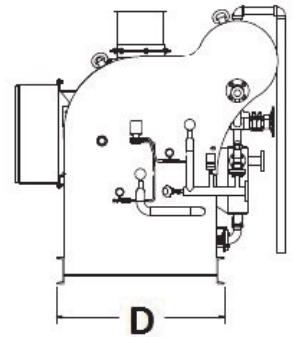
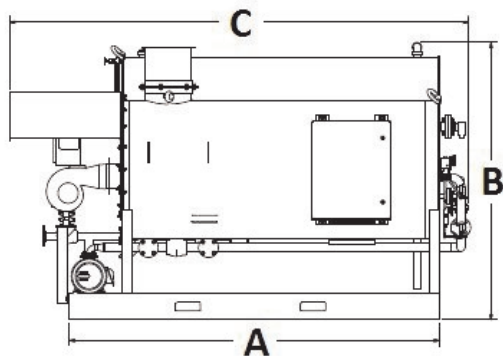
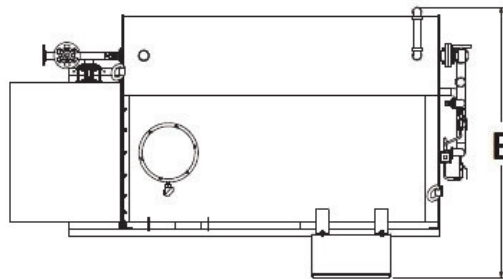
HEATER USES  
EASY TO SEE  
DISPLAYS



EASY TO READ  
SIGNAGE ON  
VALVE POSITION



## HEATER DIMENSIONS



	A	B	C	D	E
1MMBTU	6'-5"	7'-3"	8'-8"	4'-3"	6'-11"
2MMBTU	9'-5"	8'-1"	11'-8"	4'-3"	6'-11"
3MMBTU	11'-4"	8'-11"	12'-5"	5'-4"	6'-11"

DIMENSIONS ARE SUBJECT TO CHANGE WITHOUT NOTICE

4381 FRONT MOUNTAIN ROAD  
BELLEVILLE, PA 17004  
717-667-6000  
WWW.MEEKEREQUIPMENT.COM

